

# DR Ball Valves

## Copper Connections

### Scope of Use / Specification Sheet

SharkBite Max™ is a high-performance Push-To-Connect solution suitable for Copper and PEX applications.

SharkBite® is manufactured under our stringent and rigorous quality control to ensure every fitting and pipe meets the demands of real-world plumbing.

The system includes fittings suitable for PEX in 16mm, 20mm and 25mm sizes as well as fittings suitable for Copper in DN15, DN20 and DN25 sizes, offering robust versatility for new installations, maintenance and retrofit applications. Made for domestic and commercial water supply systems. Designed for licensed plumbers who value precision and reliability. It's a smart, stronger and faster way to get the job done.



FC670

#### Features and Benefits

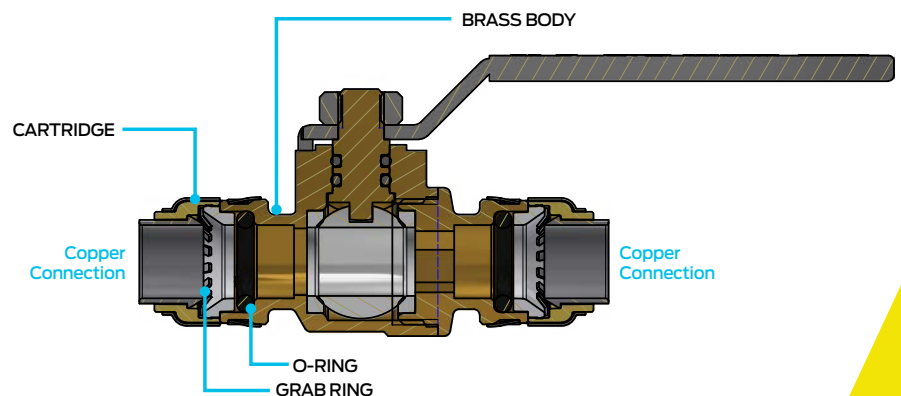
- Patented technology
- Quick and easy to install in both wet and dry conditions
- No expensive tools required—no soldering, glue or joining tools
- Approved for behind the wall application
- Approved for underground installation with SharkBite® Silicone Wrap (VC870)
- Demountable, reusable and rotatable after installation
- Reinforced 304 stainless steel collar for extra strength

#### Product List

Order Code	Retail Code	Description
FC670	FC670A	DN15 Cu
FC672	FC672A	DN20 Cu
FF674		25mm (DN25 Cu) Suits PEX or Copper

#### Materials

Body	Lead Free DZR C69300
Grab Ring	316 Stainless Steel
O-Ring	EPDM
Cartridge Components	15% Glass-filled Nylon 6



**25 YEAR**  
GUARANTEE

All SharkBite® fittings are guaranteed against defects in materials or manufacturing for a period of 25 years from the date of purchase.

[sharkbite.com.au](http://sharkbite.com.au) | 1800 810 803 | [sales.au@rwc.com](mailto:sales.au@rwc.com)

EPK0246 REV -

## DR Ball Valves

### Copper Connections

#### Installation

Installation is subject to the requirements of the applicable regulatory authority, the National Construction Code Volume Three – Plumbing Code of Australia, associated reference standards as applicable at the time and AS/NZS 3500. This product is compliant to the Lead Free requirements of the National Construction Code Volume Three. For further Scope of Use, please visit [www.sharkbite.com.au/resources](http://www.sharkbite.com.au/resources).

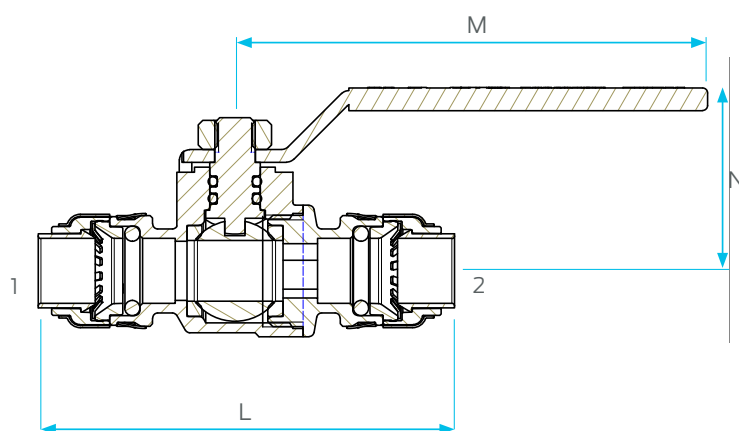
#### Warranty

Reliance Worldwide Corporation (Aust.) Pty. Ltd. (RWC) will either replace or repair any defective goods where the defect arose as a result of manufacture within the warranty period. You may contact RWC at the phone number or e-mail shown below for further information or to make a claim.

Visit [www.sharkbite.com.au/warranty](http://www.sharkbite.com.au/warranty) to view the warranty statement in full and for further important information.

#### Product Dimensions

Code	1	2	Weight	L	M	N
FC670	DN15 Cu	DN15 Cu	171g	84	94	39
FC672	DN20 Cu	DN20 Cu	302g	98	105	44
FF674	25 OD (DN25 Cu)	25 OD (DN25 Cu)	447g	109	105	45



#### Standards and Approvals



#### Maximum Operating Pressure and Temperature

Pipe	Max Temp (95°C)
Copper	2000kPa

**Note:** All measurements in mm unless otherwise stated.