



SharkBite Max™

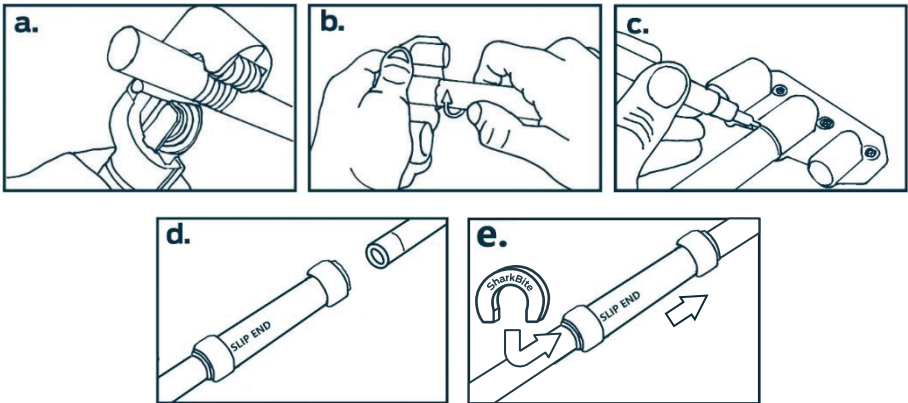
Copper Slip Couplings Installation Instructions

To ensure fittings stay clean and the O-Ring is protected from damage, fittings must be kept in original packaging until immediately prior to installation.

SharkBite Copper fittings are supplied factory assembled, requiring no additional components and cannot be disassembled. Do not use any additional lubricant or sealing compounds.

To make the perfect SharkBite Copper joint, check that fittings and pipe are clean, in good condition and are free from damage and foreign objects.

Slip couplings can repair up to a 50mm section of pipe.



- Remove and discard the damaged section of pipe by cutting squarely with a tube cutter. Do not use a hacksaw, as this will cause damage to the pipe ends.
- Deburr the ends of both pipes using the SharkBite F702 Depth Gauge and Deburrer. Be sure to remove any sharp edges that may damage the O-Ring.
- Mark both pipes with a marker, using the SharkBite F702 Depth Gauge and Deburrer to determine the correct insertion depth.
- Install the "Slip End" (marked on the fitting) by pushing and sliding onto the pipe, ensuring that the non "Slip End" can be aligned with the other pipe.
- Use a Disassembly Clip to release the installed "Slip End", allowing the slip coupling to slide forward and be pushed onto the other pipe. To ensure correct insertion depth, the mark made on the pipes should rest against the collar of the non "Slip End" and rest against or inside the collar of the "Slip End".
- Inspect for leaks. If the slip coupling is leaking, disconnect and re-connect both pipes using the steps above. Ensure to clean the ends of the pipes to remove any debris that could interfere with the sealing of the O-Ring. If the leak persists after the second installation remove and replace fitting following same instructions. There may be debris around the O-Ring or O-Ring damage that cannot be repaired, discard fitting.