

F12 Conversion Elbows

SDR9 PEX – Cu

Scope of Use / Specification Sheet

SharkBite Max™ is a high-performance Push-To-Connect solution suitable for Copper and PEX applications.

SharkBite® is manufactured under our stringent and rigorous quality control to ensure every fitting and pipe meets the demands of real-world plumbing.

The system includes fittings suitable for PEX in 16mm, 20mm and 25mm sizes as well as fittings suitable for Copper in DN15, DN20 and DN25 sizes, offering robust versatility for new installations, maintenance and retrofit applications. Made for domestic and commercial water supply systems. Designed for licensed plumbers who value precision and reliability. It's a smart, stronger and faster way to get the job done.



FF250

Features and Benefits

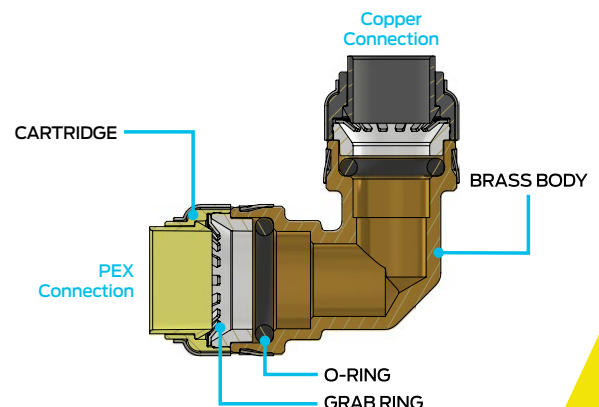
- Patented technology
- Quick and easy to install in both wet and dry conditions
- No expensive tools required—no soldering, glue or joining tools
- Approved for behind the wall application
- Approved for underground installation with SharkBite® Silicone Wrap (VC870)
- Demountable, reusable and rotatable after installation
- Reinforced 304 stainless steel collar for extra strength

Product List

Order Code	Retail Code	Description
FF250	FF250A	16mm OD × DN15 Cu
FF258	FF258A	20mm OD × DN20 Cu

Materials

Body	Lead Free DZR C69300
Grab Ring	316 Stainless Steel
O-Ring	EPDM
Cartridge Components	15% Glass-filled Nylon 6



25 YEAR
GUARANTEE

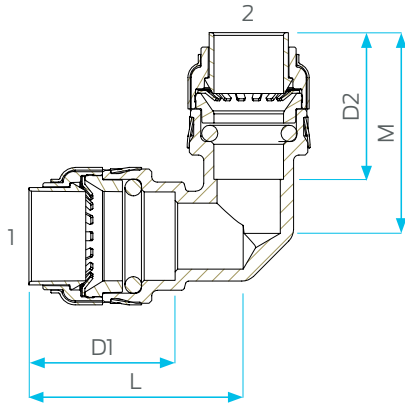
All SharkBite® fittings are guaranteed against defects in materials or manufacturing for a period of 25 years from the date of purchase.

sharkbite.com.au | 1800 810 803 | sales.au@rwc.com

EPK0251 REV -

F1 Conversion Couplings

SDR9 PEX – Cu



Product Dimensions

Code	1	2	D1	D2	L	M
FF250	16 OD SDR9	DN15 Cu	27	27	40	37
FF258	20 OD SDR9	DN20 Cu	31	32	41	43

Working Pressures and Temperatures

Pipe	Working kPa / °C	Max kPa / °C
PEX SDR9	Rated to 2000kPa at 20°C	Rated to 1000kPa at 70°C
Copper		Rated to 2000kPa at 95°C

PEX Dimensions

Nominal Outside Diameter	16mm	20mm	25mm
Average Wall Thickness	2.2	2.5	3.0
Average Internal Diameter	11.9	15.2	19.2

Installation

Installation is subject to the requirements of the applicable regulatory authority, the National Construction Code Volume Three – Plumbing Code of Australia, associated reference standards as applicable at the time and AS/NZS 3500. This product is compliant to the Lead Free requirements of the National Construction Code Volume Three. For further Scope of Use, please visit www.sharkbite.com.au/resources.

Warranty

Reliance Worldwide Corporation (Aust.) Pty. Ltd. (RWC) will either replace or repair any defective goods where the defect arose as a result of manufacture within the warranty period. You may contact RWC at the phone number or e-mail shown below for further information or to make a claim.

Visit www.sharkbite.com.au/warranty to view the warranty statement in full and for further important information.

Standards and Approvals


Lead Free
 AS/NZS 2537.2
 LN02056


Lead Free
 AS 3688
 LN21048

Note: All measurements in mm unless otherwise stated.